

REVIEWED

By Anne Nord at 8:27 am, Nov 23, 2020

§ !"#\$\$

!"#\$%&()*+,,

!&'()*+&*+ ,-. .,-.(-41+ /+*)0,1-,23			
##\$56 76)		&.8#9!&.8#"8';;<8.=:>?/@=A!-B)8*C@DDE8FG8%)5HHH
##\$56# J)		&.8#9!&.8#"8';;<8.=:>?/@=A!-B)8*C@DDE8FG8%)5HHH
##\$56##\$)		&.8#9!&.8#"8';;<8.=:>?/@=A!-B)8*C@DDE8FG8%)5HHH
##\$56#"#)		&.8#9!&.8#"8';;<8.=:>?/@=A!-B)8*C@DDE8FG8%)5HHH
1#\$57 J 6)		&.8#9!&.8#"8';;<8.=:>?/@=A!-B)8*C@DDE8FG8%)5HHH
1#\$57 7J)		&.8#9!&.8#"8';;<8.=:>?/@=A!-B)8*C@DDE8FG8%)5HHH
1#\$57 "#)		&.8#9!&.8#"8';;<8.=:>?/@=A!-B)8*C@DDE8FG8%)5HHH
1#\$57 KK)		&.8#9!&.8#"8';;<8.=:>?/@=A!-B)8*C@DDE8FG8%)5HHH
1#\$57#\$#)		&.8#9!&.8#"8';;<8.=:>?/@=A!-B)8*C@DDE8FG8%)5HHH
1#\$57#\$6)		&.8#9!&.8#"8';;<8.=:>?/@=A!-B)8*C@DDE8FG8%)5HHH
1#\$57#\$")		&.8#9!&.8#"8';;<8.=:>?/@=A!-B)8*C@DDE8FG8%)5HHH
1#\$57#\$L)		&.8#9!&.8#"8';;<8.=:>?/@=A!-B)8*C@DDE8FG8%)5HHH
1#\$57# #)		&.8#9!&.8#"8';;<8.=:>?/@=A!-B)8*C@DDE8FG8%)5HHH
1#\$57##9)		&.8#9!&.8#"8';;<8.=:>?/@=A!-B)8*C@DDE8FG8%)5HHH
1#\$57#7)		&.8#9!&.8#"8';;<8.=:>?/@=A!-B)8*C@DDE8FG8%)5HHH
1#\$57#7#)		&.8#9!&.8#"8';;<8.=:>?/@=A!-B)8*C@DDE8FG8%)5HHH
1#\$57#77)		&.8#9!&.8#"8';;<8.=:>?/@=A!-B)8*C@DDE8FG8%)5HHH
1#\$57#7")		&.8#9!&.8#"8';;<8.=:>?/@=A!-B)8*C@DDE8FG8%)5HHH
1#\$57#7L)		&.8#9!&.8#"8';;<8.=:>?/@=A!-B)8*C@DDE8FG8%)5HHH
1#\$57#7K)		&.8#9!&.8#"8';;<8.=:>?/@=A!-B)8*C@DDE8FG8%)5HHH
1#\$57#7J)		&.8#9!&.8#"8';;<8.=:>?/@=A!-B)8*C@DDE8FG8%)5HHH

!"#\$%&()*+,,

§

%&'()*+ ,-. ,+.-(-41+ /+*)0,1-,23

1#\$\$57#6\$ ')l &.8#9!&.8#"8';;<8.=:>?/@=A!-B)8*C@DDE8FG8%)5HHH

1#\$\$57#6 ')l &.8#9!&.8#"8';;<8.=:>?/@=A!-B)8*C@DDE8FG8%)5HHH

1#\$\$57#6# ')l &.8#9!&.8#"8';;<8.=:>?/@=A!-B)8*C@DDE8FG8%)5HHH

1#\$\$57#66 ')l &.8#9!&.8#"8';;<8.=:>?/@=A!-B)8*C@DDE8FG8%)5HHH

1#\$\$57#69 ')l &.8#9!&.8#"8';;<8.=:>?/@=A!-B)8*C@DDE8FG8%)5HHH

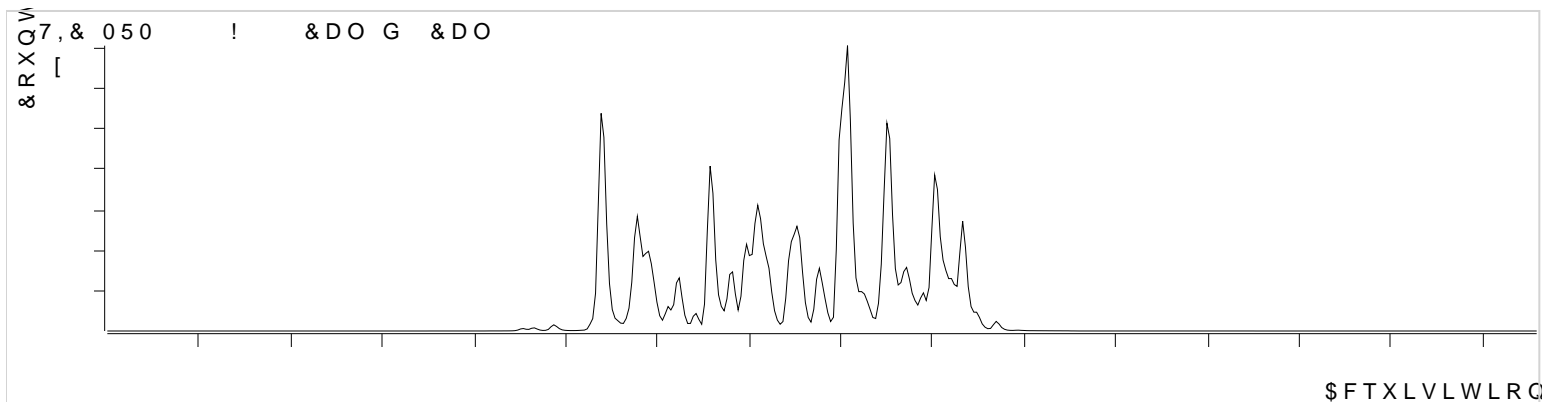
1#\$\$57#9L ')l &.8#9!&.8#"8';;<8.=:>?/@=A!-B)8*C@DDE8FG8%)5HHH

1#\$\$57#L7 ')l &.8#9!&.8#"8';;<8.=:>?/@=A!-B)8*C@DDE8FG8%)5HHH

1#\$\$57#J\$ ')l &.8#9!&.8#"8';;<8.=:>?/@=A!-B)8*C@DDE8FG8%)5HHH

1#\$\$57#J ')l &.8#9!&.8#"8';;<8.=:>?/@=A!-B)8*C@DDE8FG8%)5HHH

5



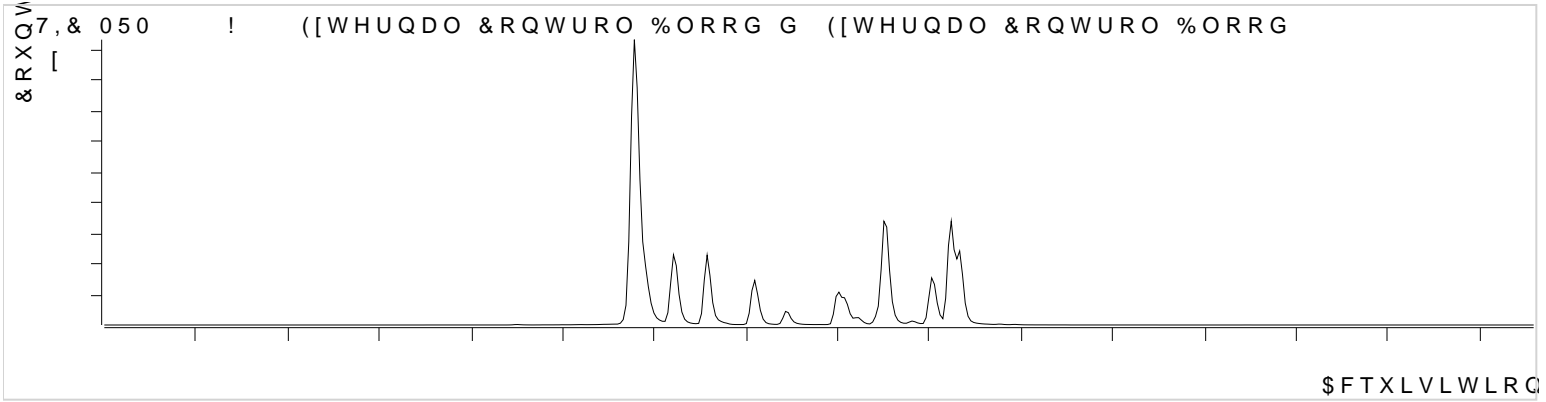
SP



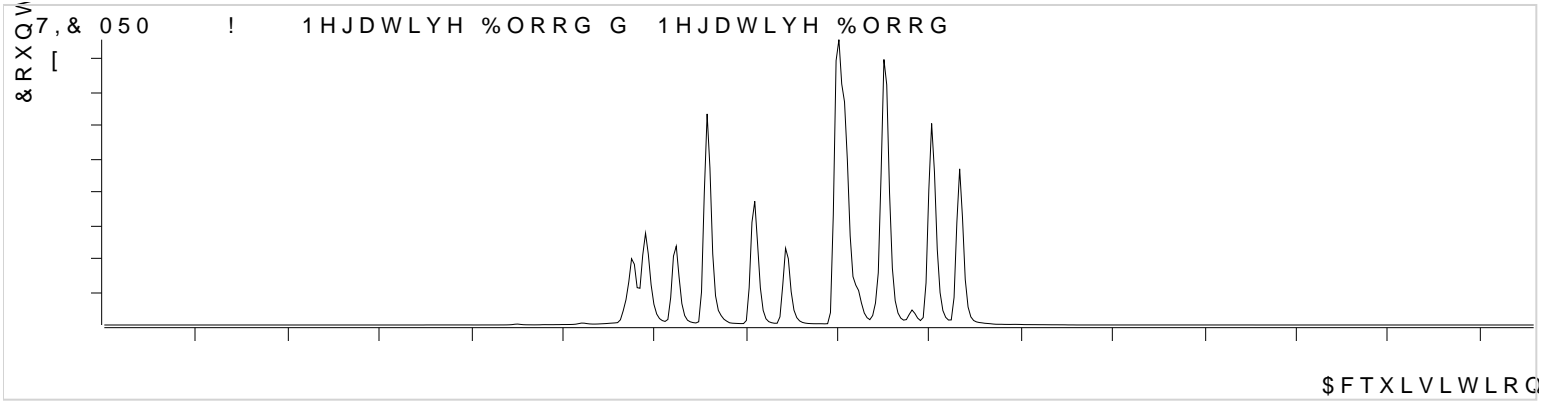
SP



5

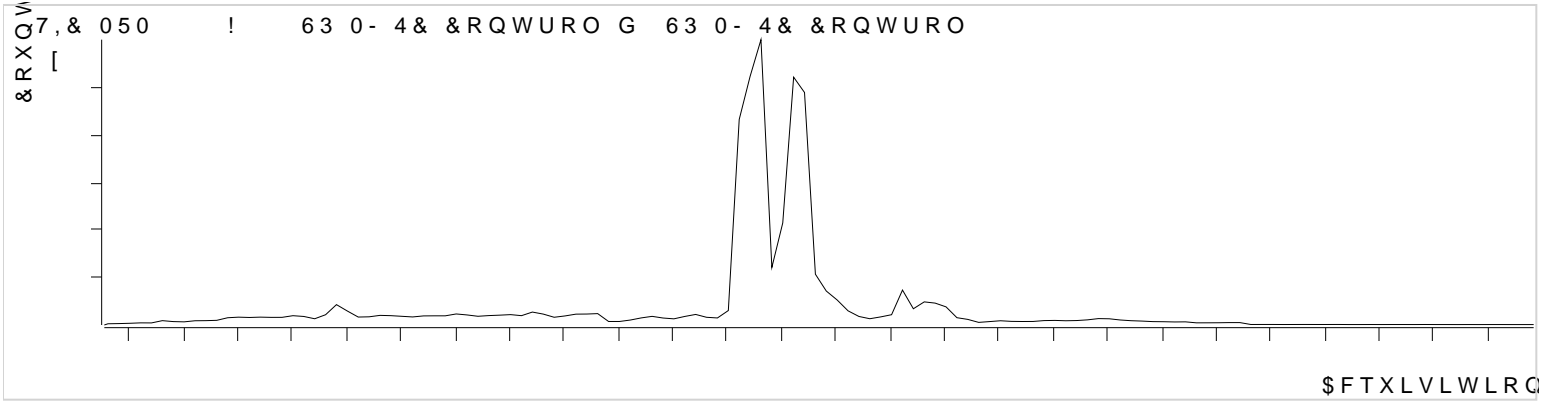


5

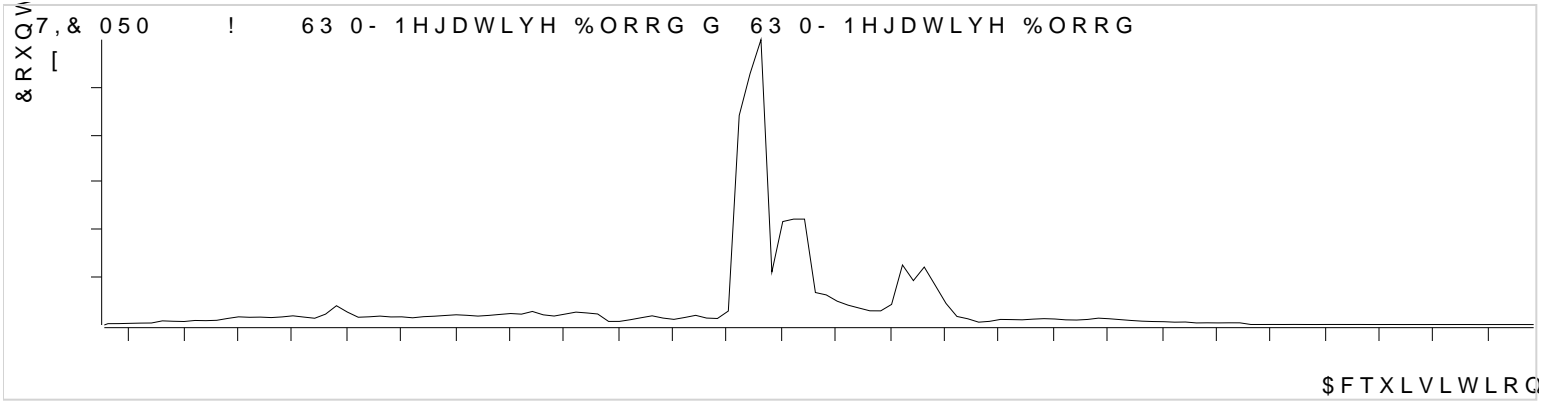


Calibrator 4 dropped on THC-COOH due to low accuracy.

SP



SP



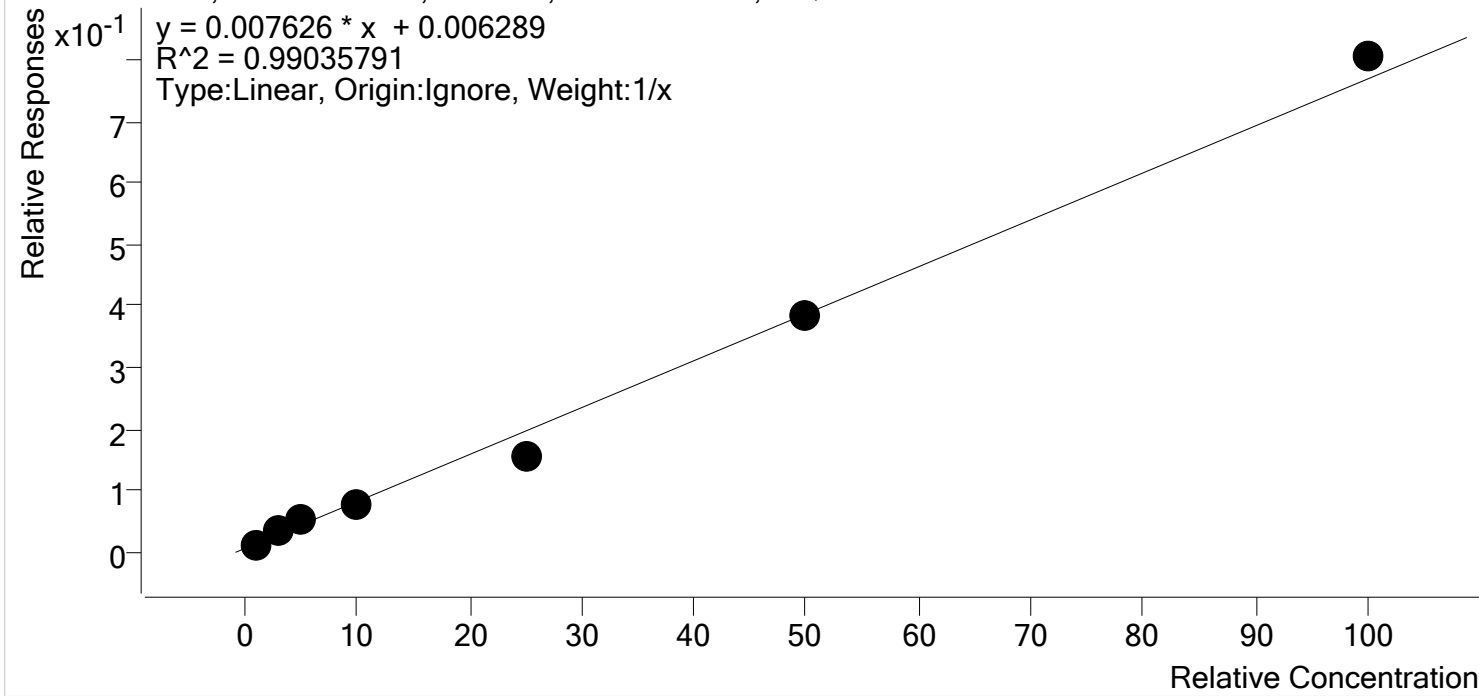


S

AM #26 Cannabinoids Screen Calibration Curve Report

Batch results D:\MassHunter\Data\2020\AM 25-26\111620 AM 25 26 SP\QuantResults\AM 26 SP.batch.bin
 Last Cal. Update 11/20/2020 12:39 PM
 Analyst Name ISP\datastor
 Analyte THC Internal Standard THC-D3

THC - 7 Levels, 7 Levels Used, 7 Points, 7 Points Used, 0 QCs



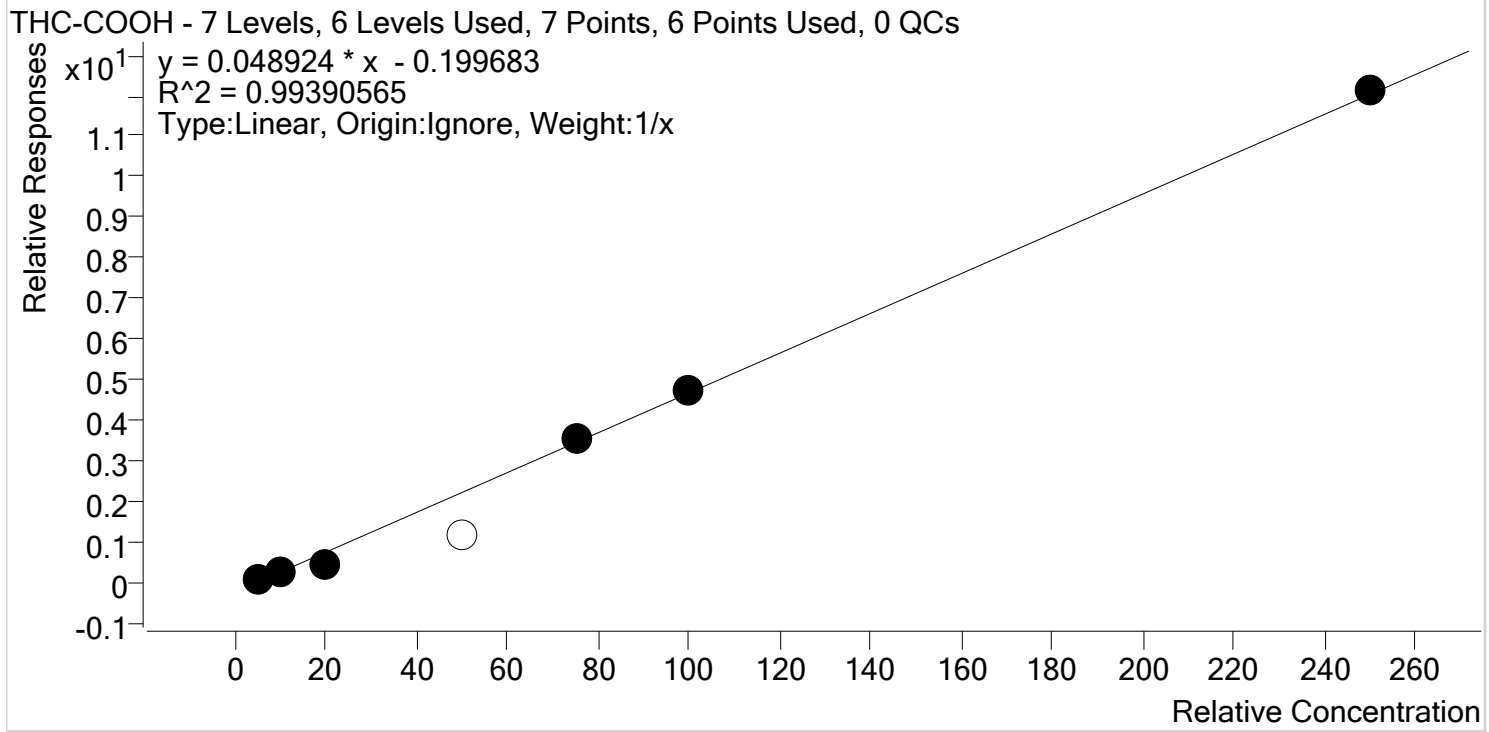
Sample	Level	Enabled	Expected Concentration	Final Concentration	Accuracy
SP MJ Cal 1	1	4	1.0	0.8	80.8
SP MJ Cal 2	2	4	3.0	3.6	121.4
SP MJ Cal 3	3	4	5.0	6.0	119.0
SP MJ Cal 4	4	4	10.0	9.5	95.4
SP MJ Cal 5	5	4	25.0	20.0	80.0
SP MJ Cal 6	6	4	50.0	49.3	98.7
SP MJ Cal 7	7	4	100.0	104.7	104.7



S

AM #26 Cannabinoids Screen Calibration Curve Report

Batch results D:\MassHunter\Data\2020\AM 25-26\111620 AM 25 26 SP\QuantResults\AM 26 SP.batch.bin
 Last Cal. Update 11/20/2020 12:39 PM
 Analyst Name ISP\datastor
 Analyte THC-COOH Internal Standard THC-COOH-D9



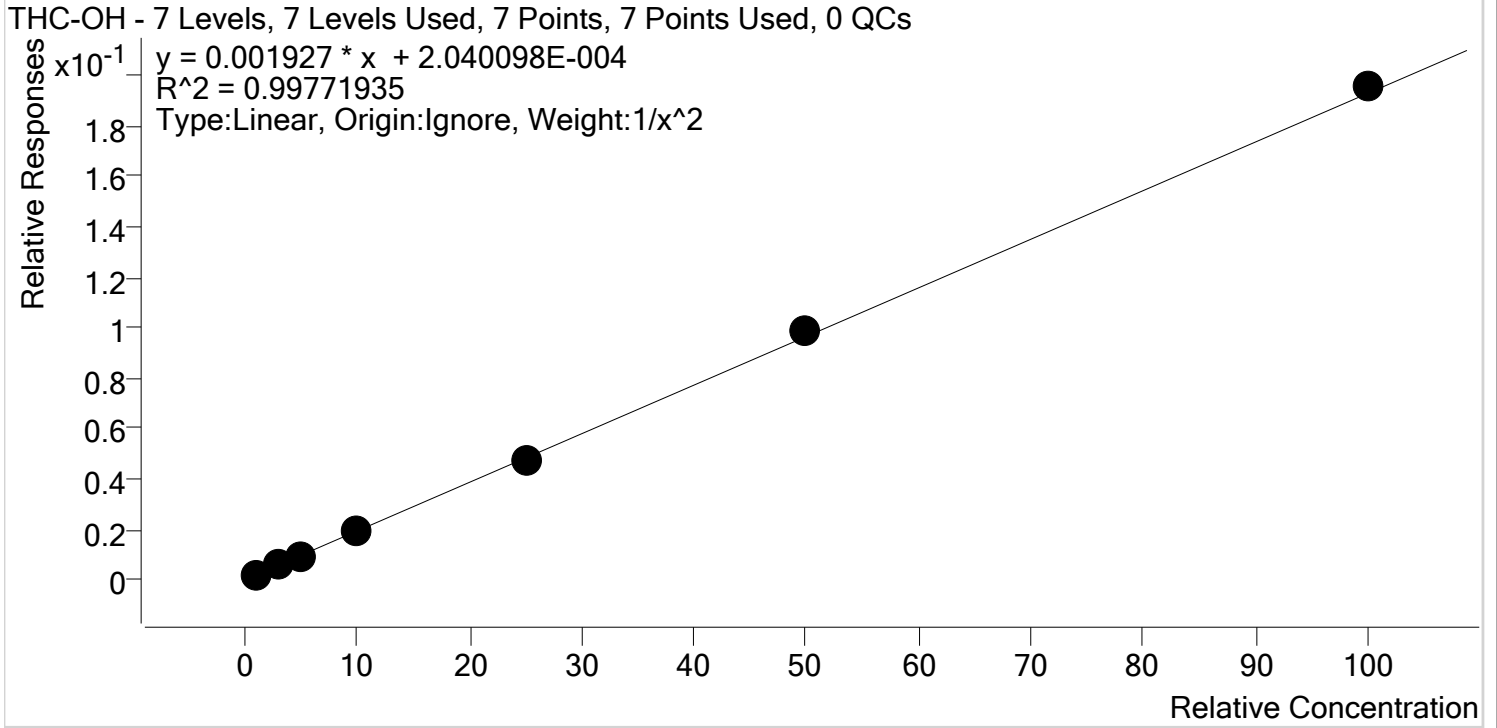
Sample	Level	Enabled	Expected Concentration	Final Concentration	Accuracy
SP MJ Cal 1	1	4	5.0	6.6	132.0
SP MJ Cal 2	2	4	10.0	9.2	91.6
SP MJ Cal 3	3	4	20.0	14.4	72.0
SP MJ Cal 4	4	7	50.0	29.0	58.0
SP MJ Cal 5	5	4	75.0	77.3	103.0
SP MJ Cal 6	6	4	100.0	100.7	100.7
SP MJ Cal 7	7	4	250.0	251.9	100.8



S

AM #26 Cannabinoids Screen Calibration Curve Report

Batch results D:\MassHunter\Data\2020\AM 25-26\111620 AM 25 26 SP\QuantResults\AM 26 SP.batch.bin
Last Cal. Update 11/20/2020 12:39 PM
Analyst Name ISP\datastor
Analyte THC-OH **Internal Standard** THC-OH-D3



Sample	Level	Enabled	Expected Concentration	Final Concentration	Accuracy
SP MJ Cal 1	1	4	1.0	1.0	100.8
SP MJ Cal 2	2	4	3.0	3.1	101.7
SP MJ Cal 3	3	4	5.0	4.6	91.2
SP MJ Cal 4	4	4	10.0	10.4	103.5
SP MJ Cal 5	5	4	25.0	24.7	99.0
SP MJ Cal 6	6	4	50.0	51.2	102.5
SP MJ Cal 7	7	4	100.0	101.4	101.4

\$0

&DQQDELQRLGV

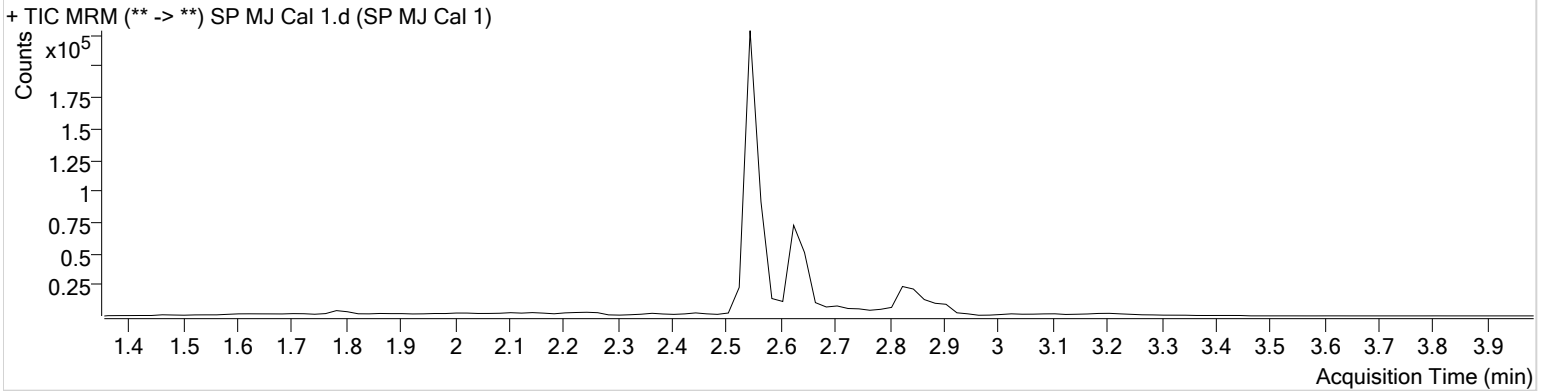
6F



%DWFK UHVXOWV' ?0DVV+XQWHU?'DWD? ?\$0 ? \$0 63?4XDQW5HVVXOWV?\$0
&DOLEUDWLRQ /DVW 8SGDWH 30

,QVWUXPHQW ,QVWUXPHQW 'DWD)LOH 63 0- &DO G
7\SH &DO 6DPSOH 63 0- &DO
\$FT 0HWKRG \$0 7+&6 P 2SHUDWRU 6DUDK 3LFNOH
6DPSOH 3RVLWBRQ &RPPHQW
,QMHWLRQ 9ROXPH
\$FT 'DWH 7LPH \$0
6DPSOH ,QIR

6DPSOH &KURPDWRJUDP



1DPH 57 5HVS ,67' 5HVS)LQDO &RQF
7+& QJ PO/RZ
7+& &22+ QJ PO
7+& 2+ QJ PO/RZ

\$0

&DQQDELQRLGV

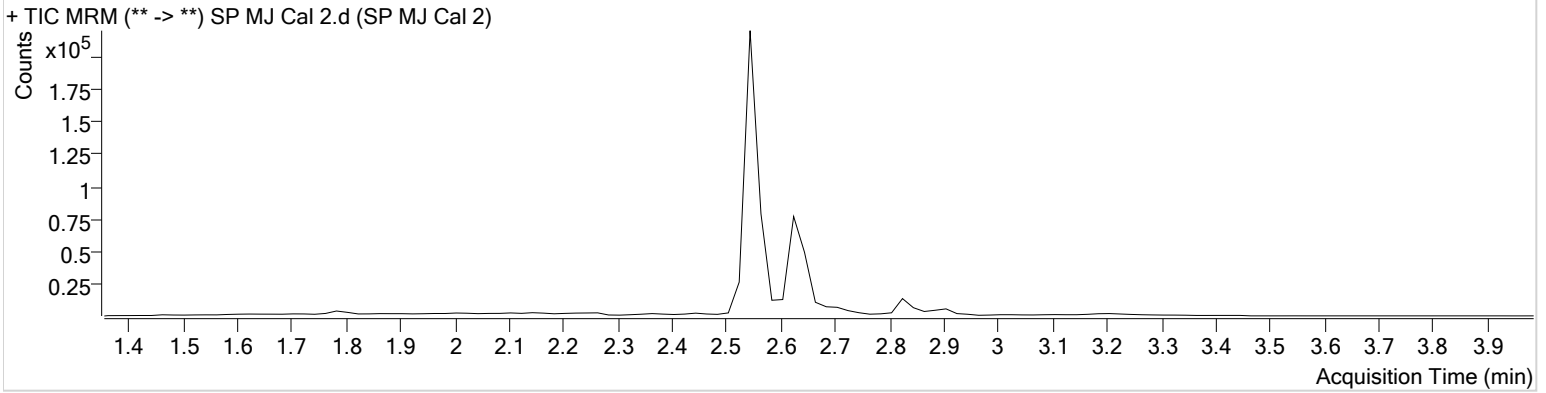
6F



%DWFK UHVXOWV' ?0DVV+XQWHU?'DWD? ?\$0 ? \$0 63?4XDQW5HVVXOWV?\$0
&DOLEUDWLRQ /DVW 8SGDWH 30

,QVWUXPHQW ,QVWUXPHQW 'DWD)LOH 63 0- &DO G
7\SH &DO 6DPSOH 63 0- &DO
\$FT 0HWKRG \$0 7+&6 P 2SHUDWRU 6DUDK 3LFNOH
6DPSOH 3RVLWBR% &RPPHQW
,QMHWLRQ 9ROXPH
\$FT 'DWH 7LPH \$0
6DPSOH ,QIR

6DPSOH &KURPDWRJUDP



1DPH 57 5HVS ,67' 5HVS)LQDO &RQF
7+& QJ PO
7+& &22+ QJ PO
7+& 2+ QJ PO

\$0

&DQQDELQRLGV

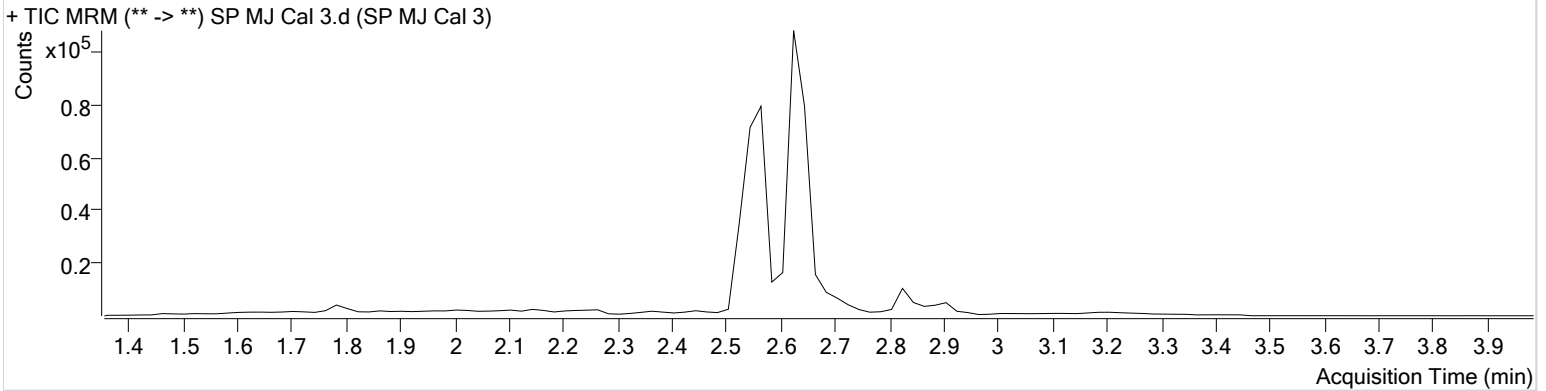
6F



%DWFK UHVXOWV' ?0DVV+XQWHU?'DWD? ?\$0 ? \$0 63?4XDQW5HVVXOWV?\$0
&DOLEUDWLRQ /DVW 8SGDWH 30

,QVWUXPHQW ,QVWUXPHQW 'DWD)LOH 63 0- &DO G
7\SH &DO 6DPSOH 63 0- &DO
\$FT 0HWKRG \$0 7+&6 P 2SHUDWRU 6DUDK 3LFNOH
6DPSOH 3RVLWBRQ &RPPHQW
,QMHWLRQ 9ROXPH
\$FT 'DWH 7LPH \$0
6DPSOH ,QIR

6DPSOH &KURPDWRJUDP



1DPH 57 5HVS ,67' 5HVS)LQDO &RQF
7+& QJ PO
7+& &22+ QJ PO
7+& 2+ QJ PO

\$0

&DQQDELQRLGV

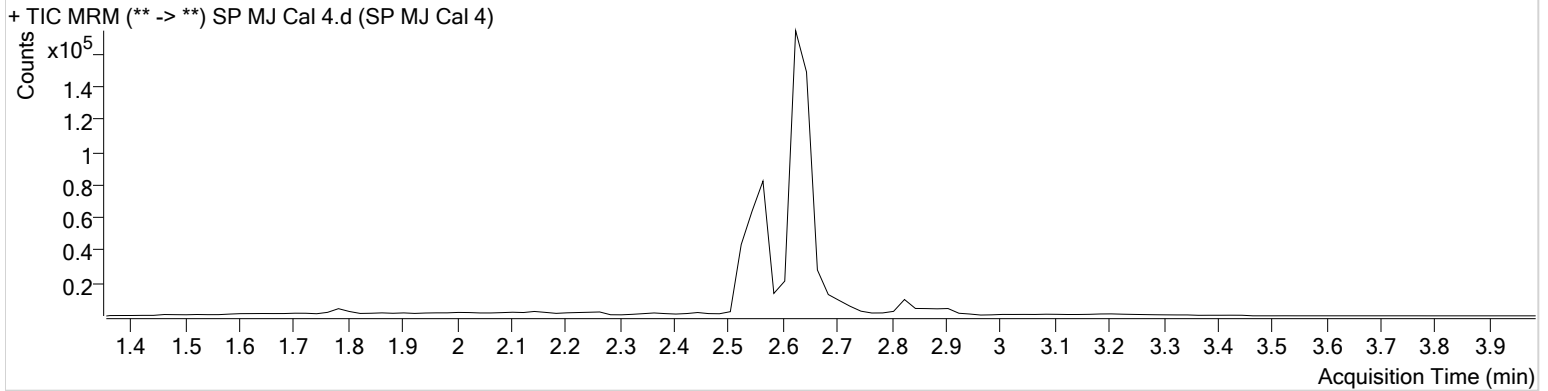
6F



%DWFK UHVXOWV' ?0DVV+XQWHU?'DWD? ?\$0 ? \$0 63?4XDQW5HVVXOWV?\$0
&DOLEUDWLRQ /DVW 8SGDWH 30

,QVWUXPHQW ,QVWUXPHQW 'DWD)LOH 63 0- &DO G
7\SH &DO 6DPSOH 63 0- &DO
\$FT 0HWKRG \$0 7+&6 P 2SHUDWRU 6DUDK 3LFNOH
6DPSOH 3RVLWBRQ &RPPHQW
,QMHWLRQ 9ROXPH
\$FT 'DWH 7LPH \$0
6DPSOH ,QIR

6DPSOH &KURPDWRJUDP



1DPH 57 5HVS ,67' 5HVS)LQDO &RQF
7+& QJ PO
7+& &22+ QJ PO
7+& 2+ QJ PO

\$0

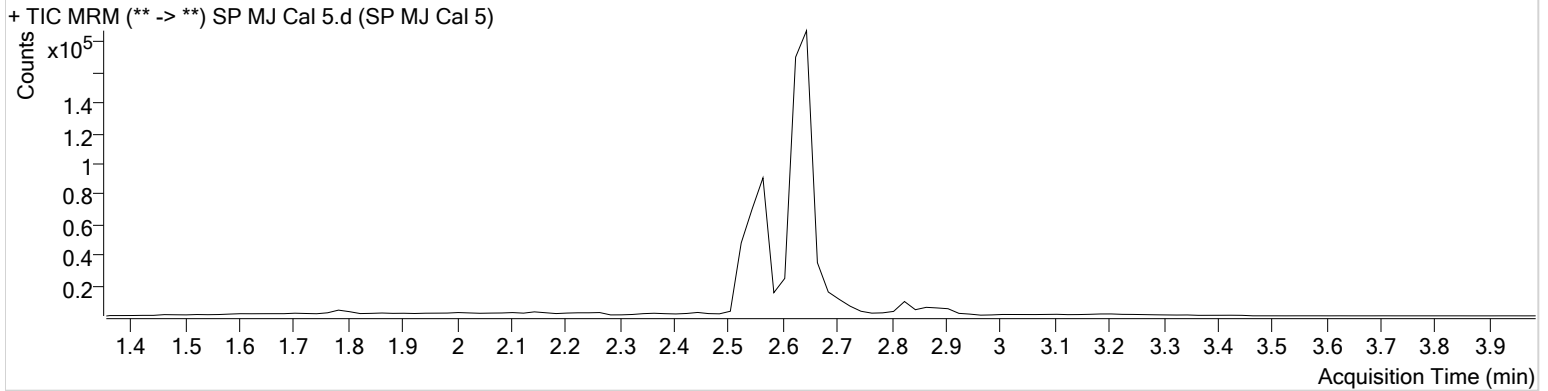
&DQQDELQRLGV



%DWFK UHVXOWV' ?0DVV+XQWHU?'DWD? ?\$0 ? \$0 63?4XDQW5HVVXOWV?\$0
 &DOLEUDWLRQ /DVW 8SGDWH 30

,QVWUXPHQW ,QVWUXPHQW 'DWD)LOH 63 0- &DO G
 7\SH &DO 6DPSOH 63 0- &DO
 \$FT 0HWKRG \$0 7+&6 P 2SHUDWRU 6DUDK 3LFNOH
 6DPSOH 3RVLWBRQ &RPPHQW
 ,QMHWLRQ 9ROXPH
 \$FT 'DWH 7LPH \$0
 6DPSOH ,QIR

6DPSOH &KURPDWRJUDP



1DPH 57 5HVS ,67' 5HVS)LQDO &RQF
 7+& QJ PO
 7+& &22+ QJ PO
 7+& 2+ QJ PO

\$0

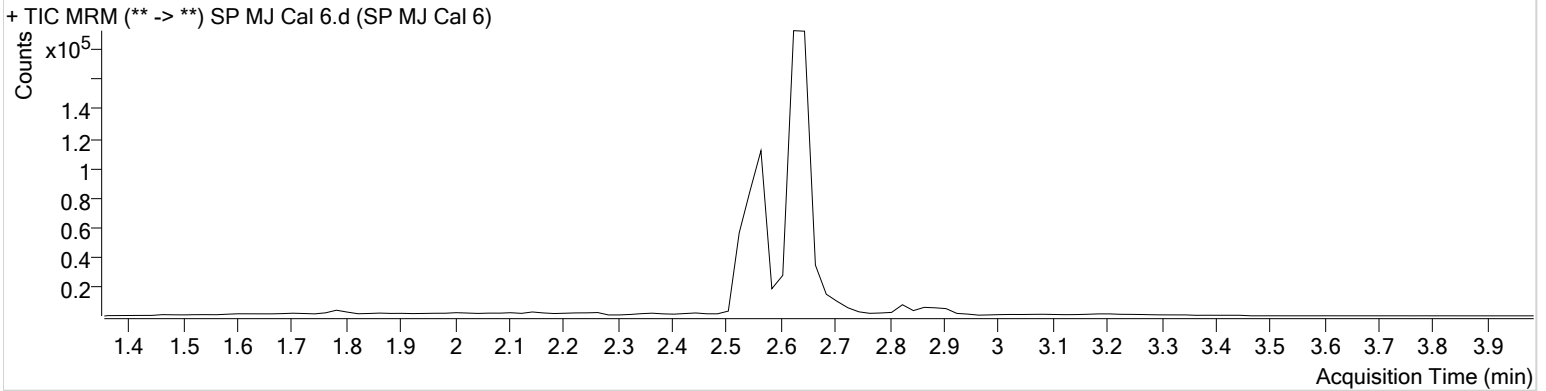
&DQQDELQRLGV



%DWFK UHVXOWV' ?0DVV+XQWHU?'DWD? ?\$0 ? \$0 63?4XDQW5HVVXOWV?\$0
 &DOLEUDWLRQ /DVW 8SGDWH 30

,QVWUXPHQW ,QVWUXPHQW 'DWD)LOH 63 0- &DO G
 7\SH &DO 6DPSOH 63 0- &DO
 \$FT 0HWKRG \$0 7+&6 P 2SHUDWRU 6DUDK 3LFNOH
 6DPSOH 3RVLWBRQ &RPPHQW
 ,QMHWLRQ 9ROXPH
 \$FT 'DWH 7LPH \$0
 6DPSOH ,QIR

6DPSOH &KURPDWRJUDP



1DPH 57 5HVS ,67' 5HVS)LQDO &RQF
 7+& QJ PO
 7+& &22+ QJ PO
 7+& 2+ QJ PO

\$0

&DQQDELQRLGV

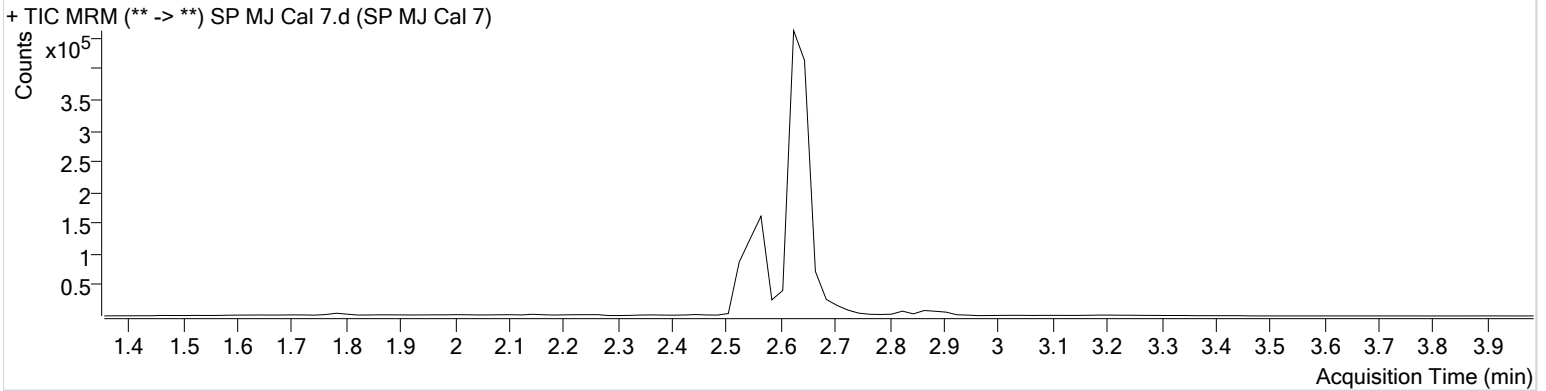
6F



%DWFK UHVXOWV' ?0DVV+XQWHU?'DWD? ?\$0 ? \$0 63?4XDQW5HVVXOWV?\$0
&DOLEUDWLRQ /DVW 8SGDWH 30

,QVWUXPHQW ,QVWUXPHQW 'DWD)LOH 63 0- &DO G
7\SH &DO 6DPSOH 63 0- &DO
\$FT 0HWKRG \$0 7+&6 P 2SHUDWRU 6DUDK 3LFNOH
6DPSOH 3RVLWBRQ &RPPHQW
,QMHWLRQ 9ROXPH
\$FT 'DWH 7LPH \$0
6DPSOH ,QIR

6DPSOH &KURPDWRJUDP



1DPH 57 5HVS ,67' 5HVS)LQDO &RQF
7+& QJ PO
7+& &22+ QJ PO
7+& 2+ QJ PO



Idaho State Police Forensic Services

Stw Ž“† —Ž-⟨æ ”—%o ...” ‡‡• „,⟩ æ

•†
Stz Ž“† —Ž-⟨æ ”—%o ‘•^⟨”•f-“⟩ •fŽ⟩•⟨
æ æææ f•‡Ž s

0HWKDQRO ([WHUQDO &RQWURO 6ROXWLRQ /RW
—/ RI PJ P/ VWRFN ZDV DGGHG WR HDFK GUXJ WR

&RPSRQHGW		6RXUFH /RWSLUDV LKQ 1XPEHU 'DWH
0HWKDQRO /&06		LVKHU
2 GHVPHWK\O 7UDPDGRO		&HULOOLDQW)1
\$PSKHWDP LQH		&HULOOLDQW)(
\$OSUD]RODP		&HULOOLDQW)(
3UHSDUHG		
3UHSDUHG %\		6DUDK 3LFNOH
([SLUHV		

%ORRG ([WHUQDO &RQWURO 6ROXWLRQ /RW :6
—/ RI PHWKDQRO H[WHUQDO FRQWURO VROXWLRQ Z
\$SSUR[LPDWHO\ QJ P/ RI HDFK FRPSRXQG

&RPSRQHGW		6RXUFH 6RXUFH /RW 1
1HJDWLYH %ORRG		+HPRVWDW
0HWKDQRO ([WHUQDO &RQWURO 6ROXWLRQ		
3UHSDUHG		
3UHSDUHG E\		6DUDK 3LFNOH
([SLUHV		